



Drive one.



**Mechanical**

- 4-wheel disc Anti-Lock Brake System (ABS)
- All-speed traction control
- Coil-over strut front suspension
- Coil spring 3-link solid-axle rear suspension
- Front and rear stabilizer bars
- Selectable-effort electronic power-assisted steering (Standard, Comfort, Sport)

**Seating**

- 4-way manually adjustable driver's bucket seat with height adjustment
- 2-way manually adjustable front-passenger bucket seat
- 50/50 split-fold rear seat (coupe only)

**Interior**

- 4-gauge instrument cluster with chrome accents
- Air conditioning
- Auxiliary audio input jack
- Carpeted front floor mats in Charcoal Black
- Cruise control
- Full center floor console with armrest and locking storage
- Ice Blue™ Lighting
- Message center
- Power door locks
- Power windows with one-touch-up/-down feature
- Powerpoints (2)
- Premium AM/FM stereo/single-CD audio system
- Sun visors with multipurpose storage system and illuminated vanity mirrors
- Tilt steering column

**Exterior**

- Complex-reflector halogen headlamps
- Easy Fuel® capless fuel filler
- Rear-window defroster
- Sequential light-emitting diode (LED) taillamps
- Variable-interval windshield wipers

**Safety & Security**

- Personal Safety System™ with dual-stage front airbags<sup>1</sup>
- AdvanceTrac® electronic stability control
- Belt-Minder® front safety belt reminder
- Front-seat side airbags<sup>1</sup>
- Illuminated Entry System
- LATCH – Lower Anchors and Tethers for Children
- MyKey® owner controls feature
- Remote Keyless Entry System with integrated keyhead transmitter remotes (2)
- Safety belt restraint system – Manual 3-point shoulder and lap safety belt system for all seating positions
- SecuriLock® Passive Anti-Theft System
- SOS Post-Crash Alert System™
- Tire Pressure Monitoring System (excludes spare)

**V6**

Equipment Group 100A  
Includes all standard features, plus:

**Mechanical**

- 3.7L Ti-VCT V6 engine with 305 hp @ 6,500 rpm and 280 lb.-ft. of torque @ 4,250 rpm
- 6-speed manual transmission
- 2.73:1 gear ratio with limited-slip rear differential
- Tire mobility kit

**Exterior**

- 17" painted aluminum wheels
- Black power sideview mirrors with integrated blind spot mirrors
- Stainless steel dual exhaust tips
- Vinyl top on convertible

**V6 Premium**

Equipment Group 200A  
Includes select V6 features, plus:

**Seating**

- 6-way power driver's seat with power lumbar
- Leather-trimmed front bucket seats

**Interior**

- 6-gauge cluster with MyColor® illumination
- Ambient lighting
- Auto-dimming rearview mirror
- Bright-aluminum instrument panel, pedal covers, door-sill scuff plates and shift knob
- Bright-chrome door speaker surrounds
- Ford SYNC® voice-activated, in-vehicle connectivity system
- Leather-wrapped steering wheel with aluminum spokes
- Shaker™ 500 Audio System with AM/FM stereo/single-CD player with MP3 capability, 8 speakers and 500 watts
- Sirius® Satellite Radio with 6-month introductory subscription
- Universal garage door opener
- Vinyl door-trim panel inserts

**Exterior**

- 17" machined aluminum wheels with painted pockets

**EPA-Estimated Fuel Economy**

- 3.7L Ti-VCT V6 engine  
Manual 19 city/29 hwy/22 combined mpg    Automatic 19 city/31 hwy<sup>2</sup>/23 combined mpg
- 5.0L Ti-VCT V8 engine  
Manual 17 city/26 hwy/20 combined mpg    Automatic 18 city/25 hwy/20 combined mpg
- 5.0L Hi-Po Ti-VCT V8 engine  
Manual 17 city/26 hwy/20 combined mpg
- 5.4L DOHC V8 engine  
Manual 15 city/23 hwy/17 combined mpg



<sup>1</sup>Always wear your safety belt and secure children in the rear seat. <sup>2</sup>Coupe only. 30 mpg hwy for convertible.



**GT**

Equipment Group 300A  
Includes all standard features, plus:

**Mechanical**

5.0L Ti-VCT V8 engine with 412 hp @ 6,500 rpm<sup>1</sup> and 390 lb.-ft. of torque @ 4,250 rpm<sup>1</sup>

6-speed manual transmission

3.31:1 gear ratio with limited-slip rear differential

Compact spare tire

**Exterior**

18" wide-spoke painted aluminum wheels

Automatic headlamps

Body-color power sideview mirrors with integrated blind spot mirrors

Bright rolled dual exhaust tips

Dark-chrome Pony badge located in grille

Fog lamps

Rear spoiler

Vinyl top on convertible



**GT Premium**

Equipment Group 400A  
Includes select GT features, plus:

**Seating**

6-way power driver's seat with power lumbar

Leather-trimmed front bucket seats

**Interior**

6-gauge cluster with MyColor® illumination

Ambient lighting

Auto-dimming rearview mirror

Bright-aluminum instrument panel, pedal covers, door-sill scuff plates and shift knob

Bright-chrome door speaker surrounds

Leather-wrapped steering wheel with aluminum spokes

Shaker™ 500 Audio System with AM/FM stereo/single-CD player with MP3 capability, 8 speakers and 500 watts

Sirius Satellite Radio with 6-month introductory subscription

SYNC®

Universal garage door opener

Vinyl door-trim panel inserts

**Exterior**

Cloth top on convertible

Soft boot for convertible top



**Boss® 302**

Equipment Group 500A  
Includes select GT features, plus:

**Mechanical**

5.0L high-output Ti-VCT V8 engine with 444 hp @ 7,400 rpm and 380 lb.-ft. of torque @ 4,500 rpm

6-speed manual transmission

3.73:1 gear ratio with limited-slip rear differential

Adjustable shocks/struts with 5 settings

Unique front and rear springs

25-mm rear stabilizer bar

Brembo™ 14" vented front rotors and 4-piston calipers

11.8" vented rear rotors with high-performance pad compound

Quad exhaust with 2 side and 2 rear outlets

Unique intake manifold with production number plate

**Seating**

Charcoal Black cloth front bucket seats with gray embroidered "BOSS 302" logo; 4-way manually adjustable

**Interior**

Alcantara® suede-wrapped steering wheel

Black cue ball-style shift knob

Dark-aluminum instrument panel appliqué

Unique gauge cluster

**Exterior**

19" x 9" front and 19" x 9.5" rear black-painted aluminum wheels with 255/40R Z-rated front and 285/35R Z-rated rear max-performance Pirelli™ P Zero™ summer-only tires

Black decklid stripe

Grille with blocked-off fog lamp openings

Modified front fascia with lower chin splitter

Painted roof in Black or White to match stripes

Unique hood stripe and reverse "C" side stripes

Black rear spoiler



**Shelby GT500™**

Equipment Group 820A  
Includes select GT Premium features, plus:

**Mechanical**

5.4L DOHC 32-valve V8 engine with 550 hp @ 6,200 rpm and 510 lb.-ft. of torque @ 4,250 rpm

6-speed manual transmission

9.0 psi boost

3.55:1 gear ratio with limited-slip rear differential

Brembo 14" vented front rotors with 4-piston calipers

Forged-steel crankshaft and connecting rods SVT-tuned suspension with unique shocks and springs

Tuned stainless steel H-pipe exhaust with 4" tips

**Seating**

Leather-trimmed front sport bucket seats with racing stripes and Alcantara suede trim

**Interior**

Leather-wrapped steering wheel with Alcantara suede trim

Message center with compass

**Exterior**

19" x 9.5" painted forged aluminum wheels with Goodyear® Eagle® F1 Supercar tires

GT500® badging

GT500 side rocker stripes

HID headlamps with autolamp

Le Mans racing stripes

Power dome hood with heat extractor

Unique rear spoiler

Exterior Dimensions <sup>2</sup>	Coupe/Convertible
Wheelbase	107.1"
Length	188.1"
Height	55.8"
Width – Excluding mirrors	73.9"
Width – Including mirrors	80.1"

Front Interior Dimensions <sup>2</sup>	Coupe/Convertible
Head room	38.5"/38.8"
Shoulder room	55.3"
Leg room	42.4"
Rear Interior Dimensions <sup>2</sup>	Coupe/Convertible
Head room	34.7"/36.5"
Shoulder room	51.6"/45.0"
Leg room	29.8"

Capacities <sup>2</sup> (cu. ft.)	Coupe/Convertible
Passenger volume	83.3/81.0
Luggage capacity	13.4/9.6
Total interior volume	96.7/90.6
Fuel capacity (gal.)	16.0

<sup>1</sup>Figures achieved using premium unleaded fuel. <sup>2</sup>Dimensions based on V6 and GT models. For Boss 302 and Shelby GT500 dimensions, see your dealer.

Shelby and GT500 are registered trademarks of Carroll Hall Shelby Trust. Front air splitter included in Laguna Seca Package is intended for racetrack use only and is not legal for on-street driving. May degrade crash performance and void vehicle warranty. Must be installed by customer. TORSEN is a registered trademark of JTEKT Corporation. RECARO is a registered trademark of RECARO Beteiligungs-GmbH. Brembo is a trademark of Brembo S.p.A. Subscriptions governed by Sirius Terms and Conditions available at sirius.com. Service available in the 48 contiguous United States and D.C. Sirius, XM and all related marks and logos are trademarks of Sirius XM Radio Inc. and its subsidiaries. HD Radio is a proprietary trademark of iBiquity Digital Corp. Alcantara is a registered trademark of Alcantara S.p.A., Italy. Pirelli is a trademark of Pirelli & C. S.p.A. Goodyear is a registered trademark of The Goodyear Tire & Rubber Company.





## V6

### Available Equipment Groups

Equipment Group 101A – **Exterior Appearance Package** includes lower bodyside tape stripes and rear spoiler

### Available Options & Packages

3.31:1 gear ratio with limited-slip rear differential (coupe only)

6-speed automatic transmission

**Reverse Sensing System & Security Package** includes Reverse Sensing System, Active Anti-Theft System and wheel locks

**V6 Performance Package** includes GT Coupe suspension, 3.31:1 gear ratio with limited-slip rear differential, unique electronic stability control tuning, strut-tower brace, unique engine cover, gloss black sideview mirrors, 19" painted machined aluminum wheels and 255/40R19 summer-only tires (manual coupe only; n/a with white stripes or Lava Red exterior)

All-weather floor mats

Hood and side stripes

Over-the-top stripe

Remote start systems (automatic only)

## V6 Premium

### Available Equipment Groups

Equipment Group 201A – **Exterior Appearance Package** includes lower bodyside tape stripes and rear spoiler

Equipment Group 202A – **V6 Pony Package** includes 18" polished aluminum wheels, satin-chrome grille, body-color sideview mirrors, fog lamps, automatic headlamps, carpeted front floor mats with embroidered Pony logo, lower bodyside tape stripes, and rear spoiler

Equipment Group 203A – **Mustang Club of America Edition** includes dark stainless-painted billet-style grille, lower fascia-mounted fog lamps, unique bodyside satin-black tape stripes, decklid tape appliqué, 18" Sterling Gray Metallic-painted aluminum wheels with P235/50R18 W-rated tires, premium carpeted floor mats, automatic headlamps, and rear spoiler

### Available Options & Packages

3.31:1 gear ratio with limited-slip rear differential (coupe only)

6-speed automatic transmission

**Comfort Package** includes 6-way power front-passenger seat, and heated front seats

**Electronics Package** includes dual-zone electronic automatic temperature control; HD Radio™; hard drive-based, voice-activated Navigation System featuring about 10 gigabytes of digital storage for pictures and music; and AM/FM stereo/single-CD/DVD with MP3 capability  
Glass roof (coupe only)

**HID Headlamps & Security Package** includes HID headlamps, Active Anti-Theft System and wheel locks (n/a with Equipment Group 200A or 201A)

Rear view camera (n/a with Equipment Group 200A)

### Reverse Sensing System & Security Package

Soft boot for convertible top

Tape stripe delete (n/a with Equipment Group 200A)

**V6 Performance Package** includes GT Coupe suspension, unique electronic stability control tuning, strut-tower brace, unique engine cover, gloss black sideview mirrors, 19" painted machined aluminum wheels and 255/40R19 summer-only tires (manual coupe only; n/a with white stripes or Equipment Group 202A)

**V6 Coupe Package** includes side scoops, quarter window louvers and decklid panel

**V6 Convertible Package** includes side scoops and quarter window louvers

All-weather floor mats

Hood and side stripes

Over-the-top stripe

Remote start systems (automatic only)

## GT

### Available Options & Packages

3.55:1 gear ratio with limited-slip rear differential (manual coupe only)

3.73:1 gear ratio with limited-slip rear differential (manual coupe only)

6-speed automatic transmission with 3.15:1 gear ratio with limited-slip rear differential

**Brembo™ Brake Package** includes Brembo 14" vented front rotors with Brembo 4-piston calipers, unique electronic stability control suspension tuning, and 19" dark stainless-painted aluminum wheels with 255/40R19 summer-only performance tires (manual transmission only)

### Reverse Sensing System & Security Package

Spoiler delete

**GT Coupe Package** includes side scoops, quarter window louvers and decklid panel

**GT Convertible Package** includes side scoops and quarter window louvers

**GT Package 4** includes hood scoop and rear pedestal-mount spoiler

**GT Coupe Package 5** includes hood scoop, side scoops, quarter window louvers, rear pedestal-mount spoiler and decklid panel

**GT Convertible Package 6** includes hood scoop, side scoops, rear pedestal-mount spoiler and decklid panel

All-weather floor mats

Hood and side stripes

Over-the-top stripe

Remote start systems (automatic only)



Drive one.



## GT Premium

### Available Equipment Groups

Equipment Group 401A – **Premier Trim With Color Accent Package** includes Charcoal Black interior environment with color-accented seats, unique door trim with bright Pony badge, aluminum shift knob and dark-aluminum instrument panel

Equipment Group 402A – **California Special Edition** includes unique billet-style grille with body-color surround, unique lower fascia with fog lamps, 19" argent-painted machined aluminum wheels with P245/45R19 tires, GT/CS side stripes, unique decklid badge with name in faux gas cap, unique instrument panel finish, Carbon door-panel inserts, leather-trimmed front bucket seats with Carbon inserts, premium carpeted front floor mats with embroidered logo, rear lower fascia insert, pedestal rear spoiler, decklid tape appliqué, and side scoops

### Available Options & Packages

18" polished aluminum wheels  
(n/a with Equipment Group 402A)

19" bright machined aluminum wheels  
(n/a with Equipment Group 402A)

19" premium Luster Nickel-painted aluminum wheels  
(n/a with Equipment Group 402A)

3.55:1 gear ratio with limited-slip rear differential  
(manual coupe)

3.73:1 gear ratio with limited-slip rear differential  
(manual coupe)

6-speed automatic transmission with 3.15:1 gear ratio  
with limited-slip rear differential

**Brembo™ Brake Package** (n/a with Equipment Group 402A)

**Comfort Package**

**Electronics Package**

Glass roof (coupe only)

**HID Headlamps & Security Package**

Rear view camera (n/a with Equipment Group 402A)

**Reverse Sensing System & Security Package**

Shaker™ 1000 Audio System with AM/FM stereo/single-CD  
player with MP3 capability, 10 speakers and 1,000 watts  
(n/a with Electronics Package)

Spoiler delete (n/a with Equipment Group 402A)

All-weather floor mats

Hood and side stripes

Over-the-top stripe

Remote start systems (automatic only)



## Boss® 302

### Available Equipment Groups

Equipment Group 501A – **Laguna Seca Package** includes 19" x 9" front and 19" x 10" rear red-painted machined aluminum wheels with Pirelli™ P Zero™ Corsa R-compound competition performance tires; 3.73:1 gear ratio with TORSEN® helical rear differential; unique rear springs and larger stabilizer bar; front brake cooling ducts and front air splitter (installation required); gauge pack with engine temperature, oil pressure and dynamic performance gauges; rear seat delete with red cross-car X-brace; RECARO® Sport cloth bucket seats with red "BOSS 302" embroidered logo; red front grille surround; red roof and mirror caps; and red rear spoiler

### Available Options & Packages

RECARO Sport cloth front bucket seats with gray "BOSS 302" embroidered logo, and TORSEN helical differential  
(n/a with Equipment Group 402A)

Boss 302 car cover and carpeted floor mats  
(includes "BOSS 302" name)



## Shelby GT500™

### Available Options & Packages

**Electronics Package**

Glass roof (coupe only)

RECARO Sport leather-trimmed bucket seats

Shaker 1000 Audio System with AM/FM stereo/single-CD  
player with MP3 capability, 10 speakers and 1,000 watts  
(n/a with Electronics Package or SVT Performance Package)

**SVT Performance Package** includes 3.73:1 gear ratio with  
limited-slip rear differential; 19" x 9.5" painted forged-  
aluminum front wheels with P265/40R19 tires; 20" x 9.5"  
painted forged-aluminum rear wheels with P285/35R20  
tires; unique front and rear springs; unique rear shocks;  
unique shift knob; unique Shelby stripes; unique bodyside  
stripes; spoiler with unique Gurney flap; and under-belly  
aerodynamic shield

Tape stripe delete (standard with Charcoal Black leather-  
trimmed seats with Black racing stripes)

GT500 car cover

**V6/V6 Premium**



17" Painted Aluminum  
Standard: **V6**



17" Machined Aluminum with Painted Pockets  
Standard: **V6 Premium**



18" Polished Aluminum<sup>1</sup>  
Included: **V6 Premium** Pony Package



18" Sterling Gray Metallic-Painted Aluminum<sup>1</sup>  
Included: **V6 Premium** Mustang Club of America Edition



19" Painted Machined Aluminum<sup>1</sup>  
Included: **V6** and **V6 Premium** Performance Packages

**GT/GT Premium**



18" Wide-Spoke Painted Aluminum  
Standard: **GT** and **GT Premium**



18" Polished Aluminum<sup>1</sup>  
Optional: **GT Premium**



19" Bright Machined Aluminum  
Optional: **GT Premium**



19" Premium Luster Nickel-Painted Aluminum  
Optional: **GT Premium**



19" Dark Stainless-Painted Aluminum  
Included: **GT** and **GT Premium** Brembo™ Brake Packages



19" Argent-Painted Machined Aluminum<sup>1</sup>  
Included: **GT Premium** California Special Edition

**Boss® 302**



19" x 9" Front/19" x 9.5" Rear  
Black-Painted Aluminum  
Standard: **Boss 302**



19" x 9" Front/19" x 10" Rear  
Red-Painted Machined Aluminum  
Included: **Boss 302** Laguna Seca Package

**Shelby GT500™**



19" x 9.5" Painted Forged-Aluminum  
Standard: **Shelby GT500**



19" x 9.5" Front/20" x 9.5" Rear  
Painted Forged-Aluminum  
Included: **Shelby GT500** SVT Performance Package

<sup>1</sup>Additional finish options available from Ford Custom Accessories.



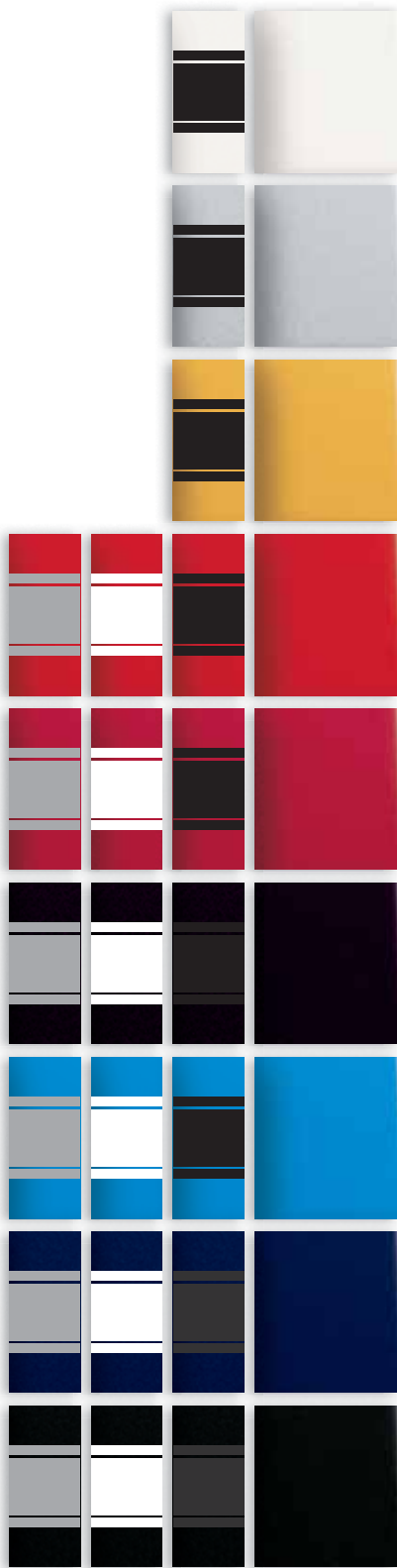
Drive one.

# V6/GT/V6 Premium/GT Premium | Specifications

Exteriors	Vinyl Convertible Top
Performance White	● ●
Ingot Silver Metallic	●
Yellow Blaze Metallic Tri-coat	●
Race Red	● ●
Red Candy Metallic Tinted Clearcoat	● ●
Lava Red Metallic	●
Grabber Blue	●
Kona Blue Metallic	● ●
Black	● ●

● Stone ● Black

**Black Cloth Convertible Top**  
is standard on GT Premium and Shelby GT500.



Exteriors	Interiors													
	V6 & GT		V6 Premium			GT Premium			Available on GT Premium					
	1	2	3	4	5	6	3	4	5	6	7	8	9	10
Performance White	1	2	3	4	5	6	3	4	5	6	7	8	9	10
Ingot Silver Metallic	1	2	3	4	5		3	4	5		7	8	9	10
Yellow Blaze Metallic Tri-coat <sup>1</sup>		2			4 <sup>2</sup>						7			10
Race Red	1	2	3	4	5		3	4	5		7	8		10
Red Candy Metallic Tinted Clearcoat <sup>1</sup>	1	2	3	4	5		3	4	5					10
Lava Red Metallic	1	2	3	4	5	6	3	4	5	6				10
Grabber Blue		2			4				4		7		9	10
Kona Blue Metallic	1	2	3	4	5		3	4	5		8	9		10
Black	1	2	3	4	5	6	3	4	5	6	7	8	9	10

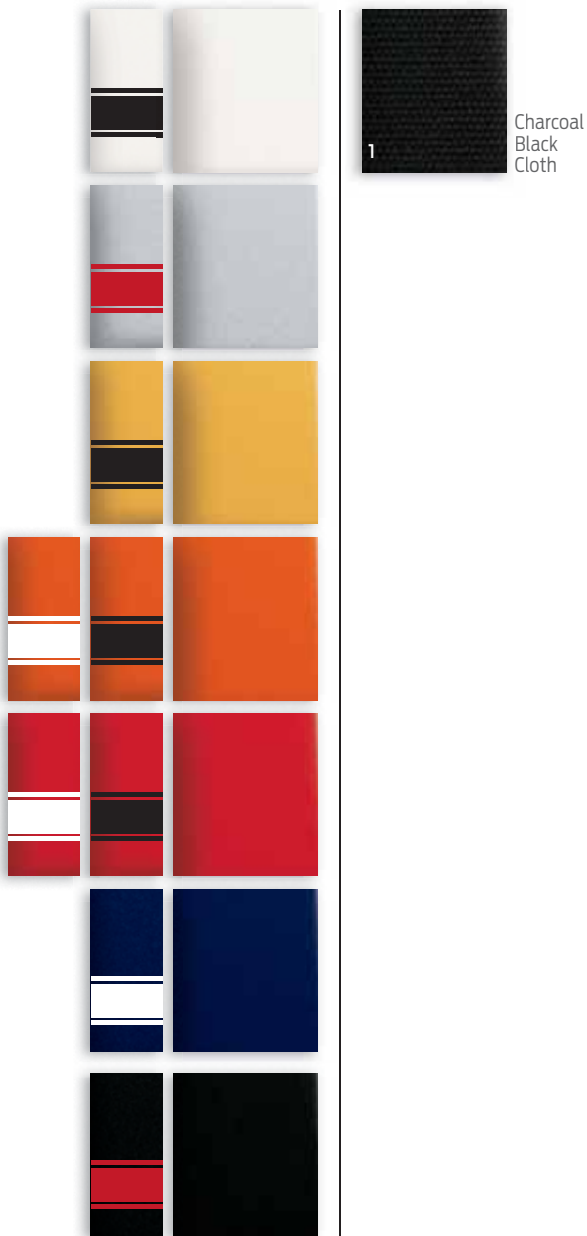
7 California Special Edition (Black side stripes)  
8, 9, 10 Premier Trim With Color Accent Package (exterior stripes not available)

Silver Stripes are offered on Pony Package only.  
Colors are representative only.  
See your dealer for actual paint/trim options.

<sup>1</sup>Additional cost. <sup>2</sup>Mustang Club of America Edition only.



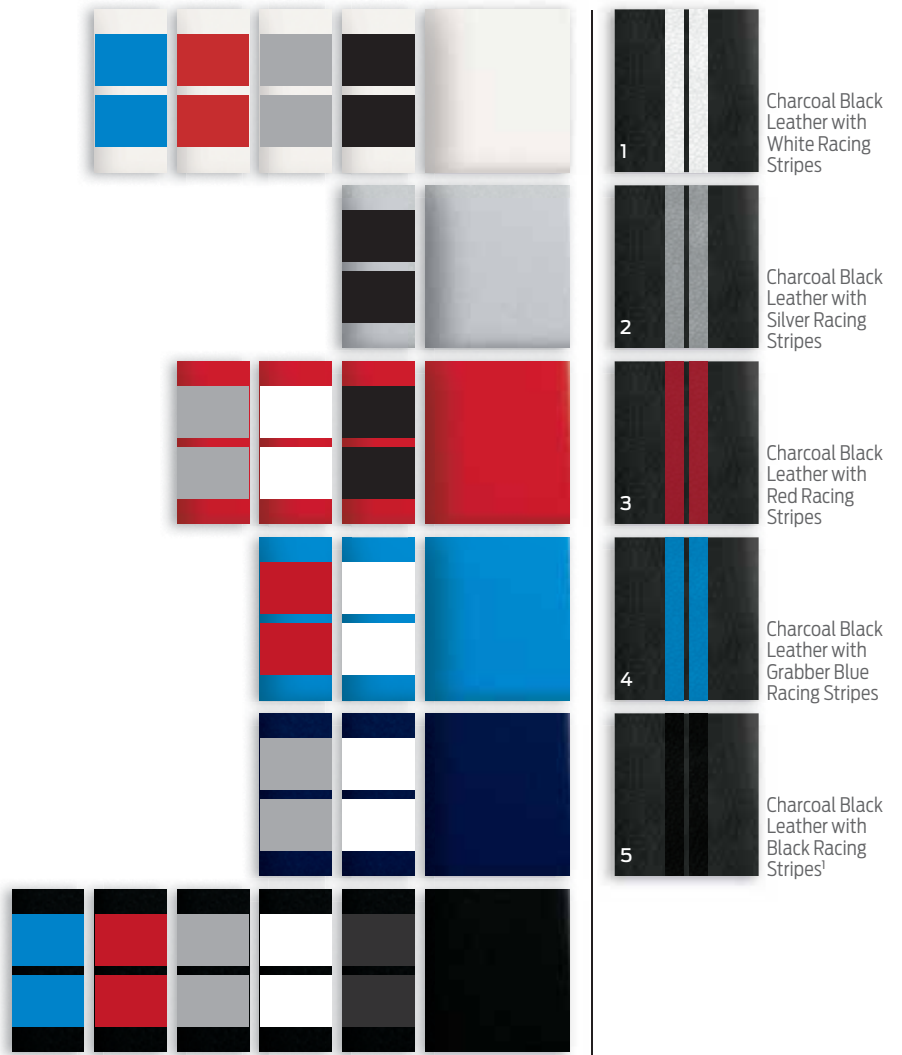
## Boss® 302 | Specifications



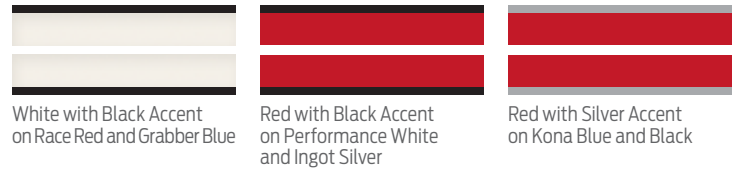
Exteriors	Interior
Performance White	1
Ingot Silver Metallic <sup>1</sup>	1
Yellow Blaze Metallic Tri-coat <sup>2</sup>	1
Competition Orange	1
Race Red	1
Kona Blue Metallic	1
Black <sup>1</sup>	1

<sup>1</sup>Ingot Silver and Black exclusive and the only available exterior colors on Laguna Seca Package. <sup>2</sup>Additional cost.

## Shelby GT500™ | Specifications



### SVT Performance Package Stripes



Exteriors	Interiors				
Performance White	2	3	4	5	
Ingot Silver Metallic				5	
Race Red	1	2		5	
Grabber Blue	1	3			
Kona Blue Metallic	1	2			
Black	1	2	3	4	5

<sup>1</sup>Standard with tape stripe delete.





# QUALITY, GREEN, SAFE AND SMART.

[ford.com](http://ford.com)

**New Vehicle Limited Warranty.** We want your Ford Mustang ownership experience to be the best it can be. So under this warranty, your new vehicle comes with 3-year/36,000-mile bumper-to-bumper coverage, 5-year/60,000-mile Powertrain Warranty coverage, 5-year/50,000-mile safety restraint coverage, and 5-year/unlimited-mile corrosion (perforation) coverage – all with no deductible. Please ask your Ford Dealer for a copy of this limited warranty. □ **Roadside Assistance.** Covers your vehicle for 5 years or 60,000 miles, so you have the security of knowing that help may be only a phone call away should you run out of fuel, lock yourself out of the vehicle, or need towing. Your Ford Dealer can provide complete details on all of these advantages. □ **Ford Credit.** Get the ride you want. Whether you plan to lease or finance, you'll find the choices that are right for you at Ford Credit. Ask your Ford Dealer for details or check us out at [fordcredit.com](http://fordcredit.com). □ **Ford Extended Service Plan.** For a purchase or lease, the Ford Extended Service Plan (ESP) gives you "Peace-of-Mind" protection designed to cover key vehicle components and protect you from the cost of unexpected repairs. Ask your dealer for a Ford ESP, the only service contract backed exclusively by Ford and honored at all Ford Lincoln Mercury dealerships. □ **Insurance Services.** Get Ford Motor Company quality in your auto insurance. Our program offers industry-leading benefits and competitive rates. Call 1-877-367-3847, or visit us at [fordvip.com](http://fordvip.com) for a no-obligation quote. Insurance offered by American Road Services Company (in CA, American Road Insurance Agency), a licensed agency and subsidiary of Ford Motor Company. □ Comparisons based on 2011 competitive models (class is V6 and V8 Sports Cars), publicly available information and Ford certification data at time of release. Some features discussed may be optional. Vehicles shown may contain optional equipment. Features shown may be offered only in combination with other options or subject to additional ordering requirements or limitations. Dimensions shown may vary due to optional features and/or production variability. Following release of the PDF, certain changes in standard equipment, options and the like, or product delays may have occurred which would not be included in these pages. Your Ford Dealer is the best source for up-to-date information. Ford Division reserves the right to change product specifications at any time without incurring obligations. □ **Genuine Ford Accessories** will be warranted for whichever provides you the greatest benefit: 12 months or 12,000 miles (whichever occurs first), or the remainder of your Bumper-to-Bumper 3-year/36,000-mile New Vehicle Limited Warranty. Ford Licensed Accessories (FLA) are warranted by the accessory manufacturer's warranty. Ford Licensed Accessories are fully designed and developed by the accessory manufacturer and have not been designed or tested to Ford Motor Company engineering requirements. Contact your Ford Dealer for warranty details.



Drive one.